



**DOT & PF Wolfe Point Slope Stability Improvements  
Public Notice  
02/28/25**

**Where? 4418 Tongass Ave (Ready Mix Quarry) Between MP 3.0 & 3.2, Road will be closed during blasting activities.**

**When? 03/03/25 through 06/31/25 6am - 6pm**

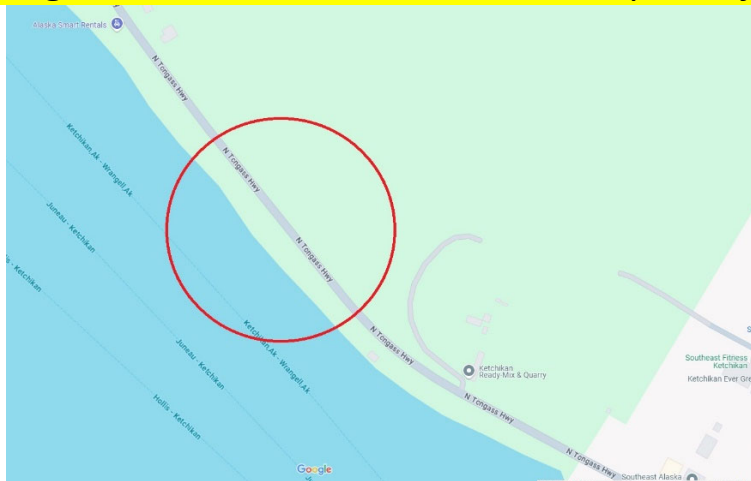
**No Traffic Restrictions 7am -8:30am and 4pm-5:30pm Monday-Friday**

**Flaggers will be stationed at the road closure points to ensure no unauthorized entry.**

**The following blast signals will be sounded on an air horn:**

- 1. Blast Warning Signal – A series of 5 (five) long signals 5 minutes prior to blasting**
- 2. Blasting imminent: A series of short signals 1 (one) minute prior to the blast**
- 3. All-Clear signal: One (1) long signal following the inspection of the blast area**

**The far west side of the Airport Parking Lot on Tongass Highway will be closed during rehabilitation of Wolfe Point Slope Project.**



**TRANSIT ALERTS** - [Transit Alerts | Ketchikan Gateway Borough, AK - Official Website \(https://www.kgbak.us/844/Transit-Alerts\)](https://www.kgbak.us/844/Transit-Alerts)

**BE AWARE OF CHANGES TO TRAFFIC PATTERNS, PEDESTRIAN TRAFFIC, PARKING, BUSINESS ACCESS**

**Check our website for traffic updates:**

<https://www.facebook.com/secon.ak> <https://ketwolfepoint.com>

**Project Office:** 4418 Tongass Ave, Ketchikan, AK 99901 **Phone:** 907-204-1335 **Fax:** 907-225-6492

**Public Information Coordinator:** Marianne Kordowski – [mkordowski@colaska.com](mailto:mkordowski@colaska.com)